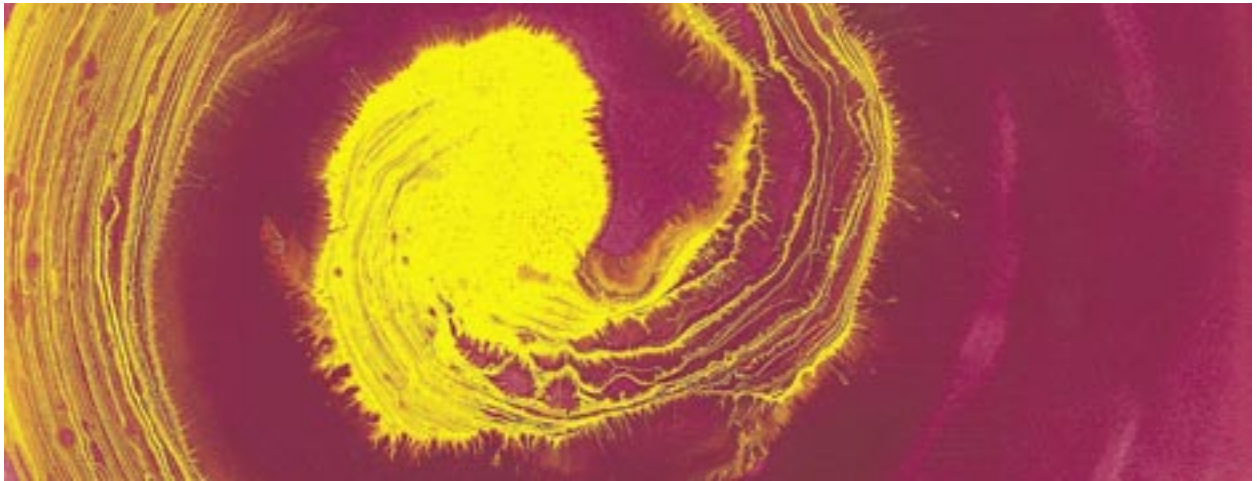


Lascaux Resonance® Gouache Colours filled with life impulses

Lascaux Resonance Gouache is a new development with specific active properties: as a result of vibratory and aromatic components, these colours support and encourage the soul's expressive potential and have a harmonic effect on both the individual and his or her environment. Lascaux Resonance Gouache can be used in all applications in which colour should be realized as a sensuous quality beyond its visual presence. Therefore, in all work processes that require creative colour employment as a central task.



Example of the use of Lascaux Resonance Gouache

Comments on a New Development

Experience in recent years has revealed that an ever increasing number of people are searching for a vital connection to colour in one form or another. People from a multitude of personal and professional backgrounds are attending an expanding number of courses offered by ateliers, artists' workshops, art therapists, painting excursions, etc. It seems as if they are all looking for a deeper, more essential relationship with themselves and with their environment. We are in an age, which on one hand holds rationality and technical advancements above everything else, and on the other increases the need for emotional experiences and their means of expression. Single-mindedness and lack of creativity lead to an impoverishment of the soul and ultimately to illness.

Within this context Lascaux has been inspired to develop a colour concept whose aim is to support the development of the whole personality. This has been based on the idea that *in relationship to colour, the creative channels of the individual are able to unfold.*

With Lascaux Resonance Gouache a paint has been created that supports and encourages the opening of creative space, achieved by the incorporation of the aromatic and vibratory components of what is known as bioinformation. This does not mean that the paint itself contains a specific dynamic by which the painter is forced into a particular direction. Just the opposite: only when a dialogue has been established with one's inner creative impulse can colours unfold to their utmost potential. Here, too, exists a search for the most ideal level of resonance. With every communication between two or more systems the principles of resonance and harmony take precedence. They create the invisible bridge over which information is exchanged and understanding is made fundamentally possible.

Colours with a Revolutionary Character!

With Lascaux Resonance Gouache we are now going one revolutionary step further in that bioinformation has been added. As a result, the colours obtain a specific resonance capacity, which has a beneficial effect on the painter as well as on the observer. The interactive union created by man and colour is increased in value by means of bioinformation, penetrated by energetic clarity and elevated to an optimum level of resonance.

Interaction with our environment

The Principle of Resonance – An Important Law of Nature

Whoever experiences it once, wants to experience it again: that genuinely nurturing feeling of well-being and harmony. The principles of resonance and harmony play essential roles in every communication between two or more systems. They create invisible bridges over which information is exchanged, making communication possible.

Matter and Information

Modern physics has recognized that matter is composed of tiny particles and, at the same time, electromagnetic waves. Consequently, all existence can be described as information saved in wave form, resonance patterns that expand within fields. This applies to matter, whether it be our bodies or a piece of metal, as well as to the immaterial, such as the brightness of a colour, the fragrance of a flower, or a fantastic idea. The dual nature of existence, matter and information, has scientifically gained more and more ground. The cognitive model, according to which matter is made up of increasingly smaller and smaller particles, has reached a point that no longer permits a further material reduction. Instead, invisible immaterial fields take over, controlling matter.

Exchange with the Environment

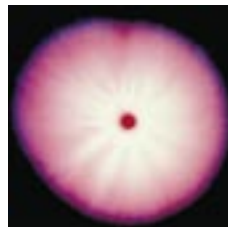
The human organism is surrounded and penetrated by a highly structured immaterial, bioelectric field over which it energetically interacts with its surroundings, exchanging in the process vital information – bioinformation. As a key fits a lock, so must bioinformation “fit” our bioenergetic field in order to be effective. Therefore, we not only need a lot of energy, but also **precisely structured energy patterns** that initiate a perfect resonance with our body. The more ordered and harmonious our own bioelectrical field and condition of our environment, the more we will experience support for inner orderliness and harmony.

Decisive Life Impulses

Man has at his disposal a system of accumulating and processing information that is so complex it is scarcely imaginable. All around us the most manifold frequency spectrum is moving in a gigantic dance. An immense selection of existentially important resonance patterns is available to us. These are impulses of life, which ultimately determine the soundness of body-mind-soul. In the event that we fail to receive these vital resonating impulses in acceptable quantities or qualities, or when deficient information disturbs our immune system, we become ill. On the other hand, if we receive harmoniously resonating bioinformation, we remain or become healthy.

What is Bioinformation?

- Bios originates from Greek and means life
- Information stands for message
- Bioinformation is accordingly living message



Energetic display of plant-based bioinformation

By means of biophysical techniques, highly structured frequency waves – resonance patterns, have been developed. They are obtained from plants, precious stones, metals, minerals, trace elements, as well as from precious gases, fermenting processes, etc. Transposed to suitable carrier materials such as tinctures or essences, and in this case added to a colour formula, they beneficially support the human energy field, specifically aimed at addressing individual potential.

Organized Structures

Because water stores information, scientists in the last decades have been able to develop methods by which they can make that information visible. It was realized that the more lively and healthy the water, the clearer the organized crystalline structures.

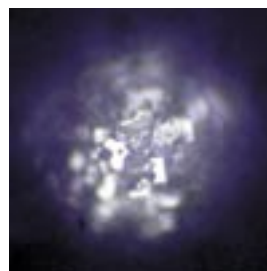


Fig. 1 Distilled water

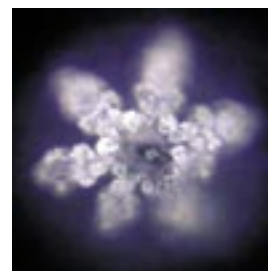


Fig. 2 Distilled water after Resonance energising

Distilled water (Fig. 1) is hardly able to develop a crystalline formation without the influence of greater vibrations.

A visual representation of a water crystal (Fig. 2) from Resonance Gouache makes the organized, crystalline structure visible and shows how Resonance brings out the energy life form.

Range of Use

Lascaux Resonance Gouache can be used in all applications in which the fine material effect of the colour is important and the awareness of subtle energy levels should be increased, especially for:

- art therapy / healing arts
- Kindergarten, school
- colour design

The use of Lascaux Resonance Gouache in the work of painters, facilitators and teachers generates a clear increase in productivity and decreased symptoms of fatigue. Students are more aware and concentrated during instruction.

Lascaux Resonance Gouache supports a balanced climate for interior designs.

Testimonies:

«Due to my work with visually impaired individuals, these colours were ideal – ‘normal’ colours can hardly be recognized by many visually impaired.»

A. Wahner – painting atelier

«Since using Lascaux Resonance colours many difficult situations have been more easily and more gracefully processed, the ability of the painter to resonate with his/her painting is increased thus allowing the therapeutic process to proceed less painfully overall.»

B. Egger – Psychotherapy and Art Therapy

«The feeling of space is optimised through the use of Resonance paints: the colours are extremely pleasing to work with; the smell, the ease of application, the touch and the vibrancy are certainly deciding factors. Clients continually express their satisfaction with the clarifying effects of the paints and stress their sense of well-being in the rooms.»

V. Jud – Natural World of Living and Building

«The joy and amazement continues to increase, not only with one finger, but with two or three always landing in the right paint tub. This requires concentration. It is always quiet in the classroom without having to say anything. Movements are always better, more coordinated.... I've had good experiences with difficult children. After a period of time they paint more quietly and can work for half an hour instead of only five minutes. This in combination with motor skills, logopedics, play-therapy, etc..»

L. Guldin – Kindergarten teacher

«In my work it is also important to awaken the senses. Resonance Colours have been created for this purpose.... The vibrant colours have a pleasing effect on the eyes as on the entire body. For example, one can stand with one's back to a painting and absorb the energy or frequency by means of the unconscious. The effect is phenomenal in comparison to other paints. I also hear corresponding comments and associations from my painters: black is not only dark, but it also feels sooty. A mixture of black and brown paints like earth, that is, as if touching earth.»

E. Hofmann – Expressing Life through Painting



Example of the use of Lascaux Resonance Gouache.



Clay plaster rendering painted with multiple layers of Lascaux Resonance Gouache.

Colour design: Vincent Jud
Gündisau Health Centre



Detail of a work from the Atelier for Life Expression through Painting, in accordance with Esther Hofmann.

Lascaux Resonance® Gouache

Base

Lascaux Resonance Gouache colours are made of age-resistant, synthetic bonding agents, naturally based thickeners, Bioinformation, sage oil, and pure, lightfast pigments.

Characteristics

- they dry velvet matte and remain water resistant
- they can be used in any desired level of dilution with water
- the gel-like consistency facilitates drip and squirt-free painting
- due to high pigmentation they are prone to cracking if applied in thick layers.


Use

- on all absorbent materials such as paper, cardboard, or canvas
- the colours are suitable as finger paints because of their smooth consistency
- all shades can easily be mixed with each other as well as other Lascaux Gouache colours
- Lascaux Resonance Gouache can also be mixed with Lascaux Acrylic Mediums for waterproof applications (e.g., interior designs). (For the pre-treatment of various supports see technical references, instruction card nr. 52304 and 52305.).

Form of Delivery

Available in plastic jars of 50 ml, 250 ml, and 500 ml and as a set of 12 jars of 50 ml.



The Lascaux Resonance Gouache assortment contains 29 shades and is physiologically and toxicologically harmless (nontoxic). A slight change in consistency may occur during storage.
CH-BAG T No. 88314, poison-free
Conforms to the European Safety Norm EN71-3 
USA – conforms to ASTM D-4236
«No Health Labeling Required»

Disclaimer:

The information provided above is given to the best of our knowledge and is based on our current research and experience. It does not absolve the artist from the responsibility of first testing the suitability of our products for the substrate and specific use conditions he or she has in mind. This technical sheet will become invalid with any revised edition. The latest update is always found on our website.



swiss made

Lascaux Colours & Restauro, Barbara Diethelm AG
Zürichstrasse 42, CH-8306 Brüttisellen
Tel. +41 44 807 41 41, Fax +41 44 807 41 40
info@lascaux.ch, www.lascaux.ch



511
Lemon yellow
PY3 PW6 **



513
Golden yellow
PY83 PY74 PW6 **



514
Orange
PY110 PY74 PR112 **



522
Vermilion
PR9 PY110 **



523
Bright red
PR170 PO34 PW6 **



524
Carmine
PR184 PR122 **



525
Purple
PR5 PV19 PR122 **



531
Violet
PV23 PR5 **



532
Magenta
PR122 PW6 ***



533
Rose
PR184 PO34 PW6 **



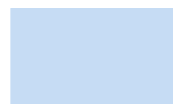
541
Ultramarine blue
PB29 ***



542
Cobalt blue
PB29 PW6 ***



544
Prussian blue
PB15:3 ***



545
Light blue
PB29 PB15:1 PW6 ***



546
Turquoise blue
PB15:3 PG7 PW6 ***



551
Veronese green
PG36 PG7 PW6 ***



552
Emerald green
PG7 PBk9 PW6 ***



553
Brilliant green
PY3 PG7 PG36 PW6 **



554
Green yellow
PY1 PG7 PW6 **



561
Beige
PY154 PR101 PW6 ***



562
Yellow ochre
PY42 PBk6 ***



563
Burnt Siena
PR101 ***



564
Burnt umber
PBk6 PBk7 ***



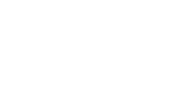
571
Grey
PW6 PB29 PBk7 ***



572
Black
PBk9 ***



573
Noir oxyde
PBk11  ***



581
White
PW6 ***



591
Gold
Cu/Zn pigment ***



592
Silver
Al pigment ***

*** excellent lightfastness
** very good lightfastness

The brilliance of the Lascaux Resonance Gouache does not reproduce well in this printing method.